



## VISUCHROME

The VISUChrome display is used in aeronautical meteorology and in all applications requiring a compact presentation of parameters.



It is based on a panel PC allowing a good restitution of the information in all different operating modes.

These indicators are directly connected to the sensors or through CAOBS Chrome.



## ● Functionalities

- All units user adjustable
- Touchscreen
- One or two runway thresholds

## ● Available modes

### ✓ Wind mode:

- Instantaneous speed and direction, updated every 3 seconds
- Speed and direction averaged on 2 or 10 minutes, updated every minutes
- Speed and direction variability on 10 minutes, updated every minute
- Wind speed unit in: m/s, km/h or kt

### ✓ Temperature/Humidity mode:

- Minute air temperature
- Minute air humidity
- Minute dew point temperature

### ✓ Pressure mode

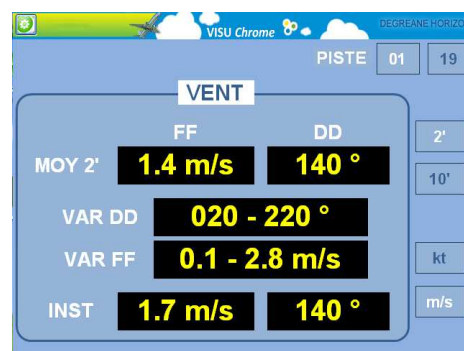
- Minute atmospheric pressure : QNH and QFE
- Pressure units: hPa or InHg

### ✓ HBN mode

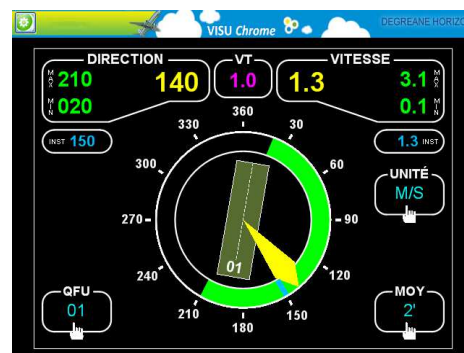
- 3 cloud base heights updated every minute
- Height units: m or ft

### ✓ RVR mode

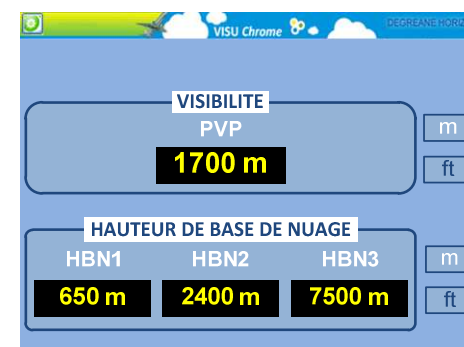
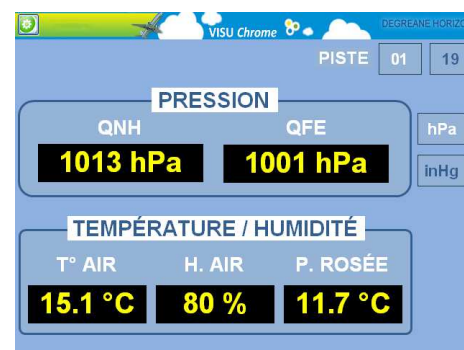
- Minute visibility
- Visibility units: m or ft



ALPHANUMERIC DISPLAY



GRAPHIC DISPLAY



Input channel	Ethernet
Power	90/260V AC 50/60 Hz output 12V DC
Operating Temperature	0°C to +50°C
Dimensions	8.4 " - 10.2 " - 12.1 "

DEGREANE HORIZON reserves the right to change above mentioned specifications without prior notice.